

952 Lasalle Park Road | Burlington





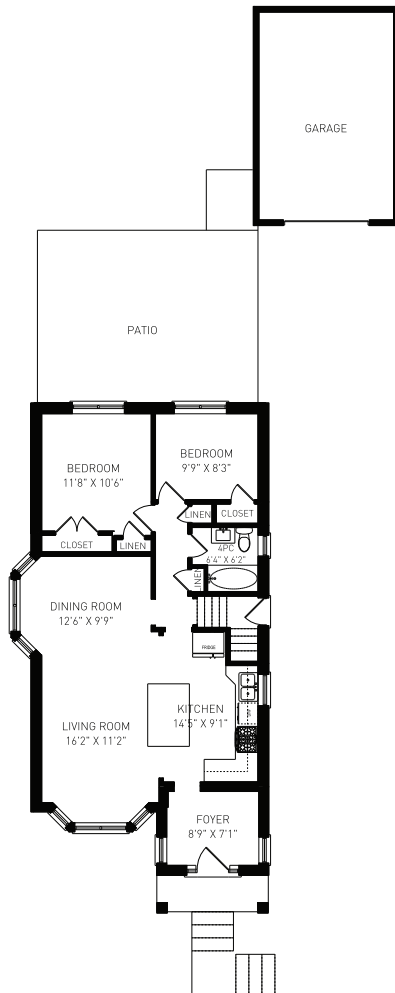
Welcome to 952 Lasalle Park!

Great value in Aldershot! This lovely, turn-key home is must see material. A major renovation in 2016 has given this home curb appeal to be proud of. Adding the stone walkway, stone accents, wood siding, a front porch, a foyer addition and more. The Kitchen and living space is open concept with an island (storage on both sides), full dining set up, and family room. The kitchen has white shaker cabinets, SS LG and Bosch appliances, gas stove and oven, valance lighting, West Elm pendants (2020), refinished hardwood flooring, BM Select paint throughout, added potlighting on dimmers, and the half-up Cali Shutters offers the perfect mix of privacy and sunshine. The floors were refinished and all windows replaced in 2016. The two main level bedrooms have original wood doors and hardware, refinished hardwood flooring, closets w/ B/I's, and double windows that open. 4pc bath w/ a large soaker tub, floor-to-ceiling subway-tile surround, openable window, and the sink, toilet, and medicine cabinet were all replaced in 2016. The basement is fully finished with a separate entrance, full ceiling height (6'5), updated carpet sitting on a raised sub floor (all 2016) to keep your toes warm, an insulated storage room addition under the porch, plenty of windows, several built-in closets and cabinets, pot lighting on dimmers, a large family room, a full bedroom, and a 3pc bath with a stone walk-in shower. The laundry room was completely renovated in 2019 with front-load Electrolux machines, full size laundry sink w/ hand washer, a window, and a full depth B/I coat closet. The low-maintenance backyard has an interlock patio (2016), armour stone gardens, large trees with great privacy, and a detached garage with stone and wood siding to complement the home. It's approx 300sqft, has separate panel, fits a full size car w/ room for storage at front, side and above. The opener has a programable opener w/ a timer. All 2016. Shingles 2016, AC 2021, Furnace Approx 2005. Overall this home has been very well kept and is in a prime location next to the lake, parks, schools, LaSalle, BG&CC, RBG, and a minute to the GO and freeway.

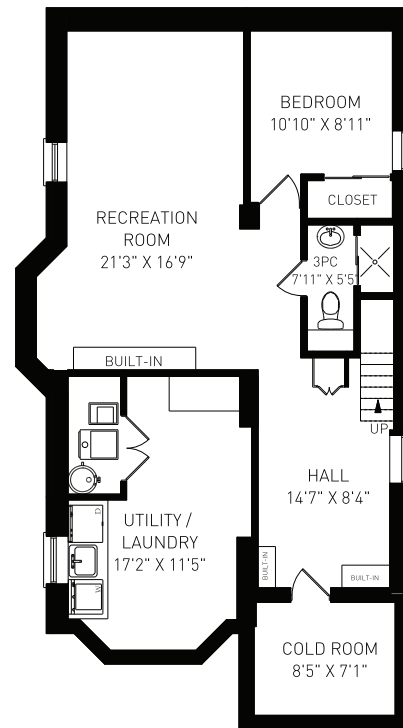


Floor Plans

952 Lasalle Park Road | Burlington



Total Main Level =
992 Square Feet



Total Lower Level =
992 Square Feet



DeborahBrown
TEAM

Direct: 905.334.9067 • Office: 866.381.7676
DeborahBrown.ca | Broker

RE/MAX
ESCAPMENT
REALTY INC., BROKERAGE
INDEPENDENTLY OWNED & OPERATED



Property Features

EXTERIOR

Natural stone and wood siding (2016)
Stone pathway & landscaping (2016)
Armour stone and pebbled gardens (2016)
Covered porch w/ pot lighting (2016)
Wood panelled porch ceiling
Poured concrete landing
Custom stone house numbers
Front foyer addition (2016)
All windows (2016)

FOYER

Addition added in 2016
Front door w/ transom windows (2016)
Windows on all sides (2016)
White porcelain tiles
Neutral Benjamin Moore paint
Pot lighting
Reclaimed barn board entrance way

OPEN CONCEPT KITCHEN

Island for 3 w/ storage on both sides
Stainless Steel LG gas oven/stove
Stainless Bosch Dishwasher
Stainless Steel LG french door fridge
B/I Microwave range hood
Half California Shutters for privacy/sunlight
Refinished hardwoods (2016)
West Elm dimmable pendant lighting (2020?)
Under valance attachable lighting
White, neutral shaker cabinets
Tile backsplash
Stainless Steel double sink

LIVING & DINING ROOM

Benjamin Moore Regel Select (2016)
Half-way California Shutters (2016)
Large bay window (2016)

BATHROOM AND HALLWAY

- Toilet, sink, mirror, and medicine cabinet (all 2016)
- Deep soaker tub
- floor-ceiling vinyl subway tile tub surround
- Tiled flooring
- Window (2016)
- Hallway painted 2023
- 2 linen closets (large drawers)

MASTER BEDROOM

- Original wood doors & hardware
- Deep single closet
- French door double closet w/ drawers
- Sconce lighting
- Double windows - both open (2016)
- Original hardwood refinished (2016)

2ND BEDROOM

- Original wood doors & hardware
- Double windows - both open (2016)
- Original hardwood refinished (2016)
- Closet w/ shelving
- Sconce lighting

BASEMENT

- 6'5 ceilings
- Separate entrance
- Carpet and runner (2016)
- Raised, levelled sub-floor
- Laminate floors (2016)
- 3x Built in closets
- Several windows - all open (2016)
- Storage room addition under porch (2016)
- Carpeted family room (2016)
- Pot lights on dimmers
- B/I cabinets included

Property Features

LAUNDRY ROOM

- Fully renovated (2019)
- Front-load Electrolux machines
- Full-size laundry sink w/ hand washer
- Counter space and window
- B/I full depth coat closet

3-PIECE BATH

- Slate tile throughout
- Walk-in shower w/ floor-ceiling tiles
- Pedestal sink and mirror
- Pot lighting

3RD BEDROOM

- Neutral carpeting (2016)
- Double-wide closet
- Pot lighting on dimmers
- Window that opens (2016)

GARAGE

- Built in 2016 w/ permits
- Approximately 302 square feet
- Separate electrical
- Poured concrete floor
- Garage door opener w/ programmable panel
- Exterior door code for opener
- Stone and wood siding to match
- Exterior feature lighting
- Double window that opens
- Windowed side door
- Fits full size car w/ room for bench/storage
- Extra ceiling storage

BACKYARD

- Mostly fenced
- Interlock patio (2016)
- Armour stone around some gardens
- Neutral and low-maintenance gardens
- Large trees for privacy

EXTRAS

- Extensive renovation (2016)
- Entire house painted w/ Benjamin Moore Regal Select (2016)
- All windows (2016)
- Refinished flooring and carpets (2016)
- Shingles 2016
- Side entrance w/ tiled landing
- A/C (2021)
- Goodman furnace (approx. 2005)
- Sump pump (unused)
- Rented water tank





The Deborah Brown Team

Let's Maximize Your Investment

We are a top-producing, award-winning team since 2009, reaching RE/MAX Titan and Diamond Club awards for 2019 and 2020. Our philosophy is to put clients first, recognizing that their home is often their single largest investment. We offer an advanced technical marketing plan, in-depth market knowledge and unmatched attention to detail. Our team consists of 3 highly motivated sales representatives offering superior negotiating skills and a proven track record. We have a fantastic and dedicated client care manager and marketing manager working behind the scenes to ensure that every detail is taken care of to ensure a smooth and memorable real estate experience.

Direct: 905.334.9067 • Office: 866.381.7676

DeborahBrown.ca | Broker

RE/MAX
ESCARPMENT
REALTY INC., BROKERAGE
INDEPENDENTLY OWNED & OPERATED

Not intended to solicit persons or properties currently under contractual agreement. Only certain areas of the property were photographed, and give an honest representation at the time they were taken. All information provided herein is deemed reliable but not guaranteed. ¹ Sales Representative, ² Broker, ³ Client Care Manager, ⁴ Marketing Manager.