



512 Karen Drive

BURLINGTON





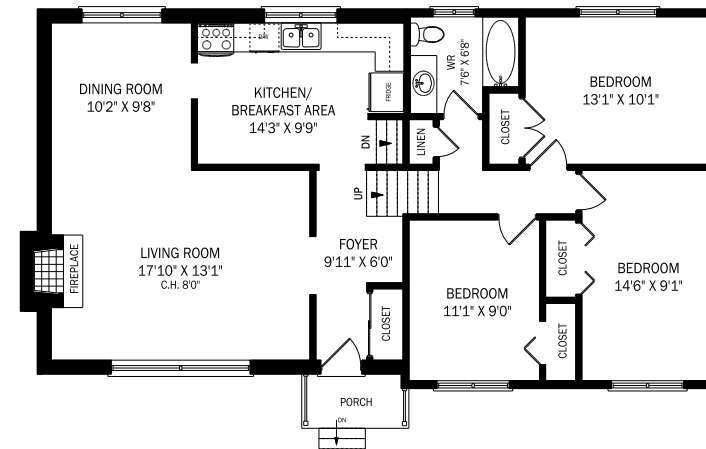
exclusive opportunity!

Live the life in the downtown core, a stones throw from Central Park! Welcome to 512 Karen Drive, a 4 bed, 2 bath split level on a quiet tucked away street in the sought after south central district. The welcoming foyer opens up to the extra large living room/dining room with stone fireplace, newer sparkling windows, refinished hardwoods and an abundance of natural light. The west facing kitchen is ideal to keep an eye on what's going on in the backyard and offers oak cabinets, lots of room to

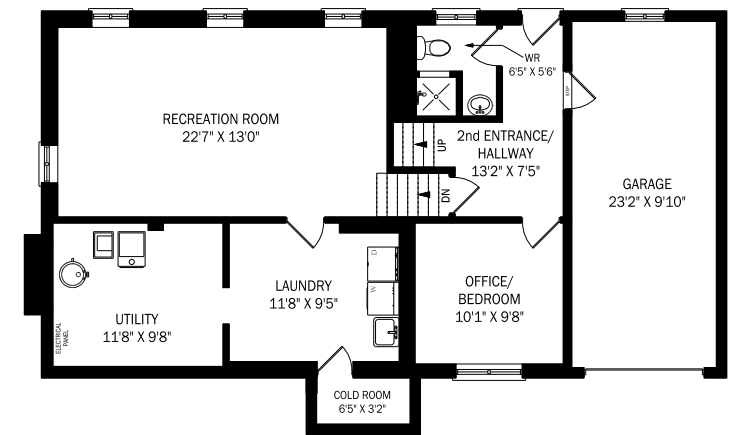
dine and easy care laminates. Just a few steps to the upper level, you have 3 fresh neutral bedrooms and a 4 pc bath. A few steps down you have the convenience of inside access to your large single garage, den/office/4th bedroom, 3pc bath and access to the incredible entertaining family friendly backyard complete with inground pool and large patio space. Do the kids need a recreation room or play room? Down one more level we have just that! Family room with gorgeous wide plank laminates

(2023), an abundance of large windows, oversized laundry room as well as the mechanical room with storage! Ton's of upgrades including furnace (2020) A/C (2020), Front entrance door (2021), Back entrance door (2021), garage door (2023) and the list goes on! Come to the core, where nature, amenities and walkability abound!

floor plans



Main Level Total = 635 Square Feet
Upper Level Total = 570 Square Feet



Ground Level Total = 286 Square Feet
Lower Level Total = 629 Square Feet





HOODQ SCHOOL REPORT

512 Karen Drive
Burlington, ON

PUBLIC SCHOOLS

Your neighbourhood is part of a community of Public Schools offering Elementary, Middle, and High School programming.

Burlington Central HS

Designated Catchment School
Grades 9 to 12
1433 Baldwin St

É ÉléM Renaissance

Designated Catchment School
Grades PK to 6
1226 Lockhart Rd

Tecumseh PS

Designated Catchment School
Grades PK to 8
3141 Woodward Ave

ÉS Georges-P-Vanier

Designated Catchment School
Grades 7 to 12
100 Macklin St N

ALTERNATIVE & SPECIAL SCHOOLS

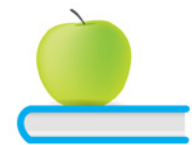
Nearby alternative and special education schools include:

Gary Allan High School - Burlington

Grades 9 to 12
3250 New St

Missing Links Academy

Grades PK to 8
2317 Fairview St



CATHOLIC SCHOOLS

Your neighbourhood is part of a community of Catholic Schools offering Elementary, Middle, and High School programming.

St Paul Catholic ES

Grades PK to 8
530 Cumberland Ave

ÉÉC Saint-Philippe

Grades PK to 6
901 Francis Rd

Assumption CSS

Grades 9 to 12
3230 Woodward Ave

ÉSC Sainte-Trinité

Grades 7 to 12
2600 Grand Oak Trail

PRIVATE SCHOOLS

The private schools nearest to you are:



Burlington Royal Arts Academy

Grades 9 to 12
2054 Mountainside Dr

Blyth Academy - Burlington

Grades 5 to 12
422 Pearl St

Fairview Glen Montessori

Grades PK to 6
3508 Commerce Ct

OneSchool Global Hamilton Campus

Grades 3 to 12
890 Harrington Ct

HoodQ

Disclaimer: These materials have been prepared for Teranet and are not intended to solicit buyers or sellers currently under contract with a brokerage. By accessing this information you have agreed to our terms of service, which are hereby incorporated by reference. This information may contain errors and omissions. You are not permitted to rely on the contents of this information and must take steps to independently verify its contents with the appropriate authorities (school boards, governments etc.). As a recipient of this information, you agree not to hold us, our licensors or the owners of the information liable for any damages, howsoever caused.



Let's Maximize Your Investment

We are a top-producing, award-winning team since 2009, reaching RE/MAX Diamond Team for 2020. Our philosophy is to put clients first, recognizing that their home is often their single largest investment. We offer an advanced technical marketing plan, in-depth market knowledge and unmatched attention to detail. Our team consists of 3 highly motivated sales representatives offering superior negotiating skills and a proven track record. We have a fantastic and dedicated client care manager and marketing manager working behind the scenes to ensure that every detail is taken care of to ensure a smooth and memorable real estate experience.

Direct: 905.334.9067 • Office: 905.381.7676

DeborahBrown.ca | Broker

RE/MAX
ESCARPMENT
REALTY INC., BROKERAGE
INDEPENDENTLY OWNED & OPERATED