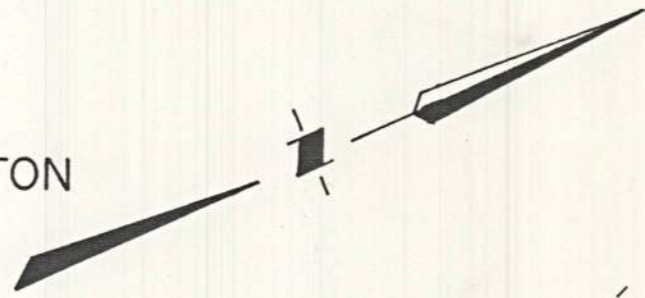


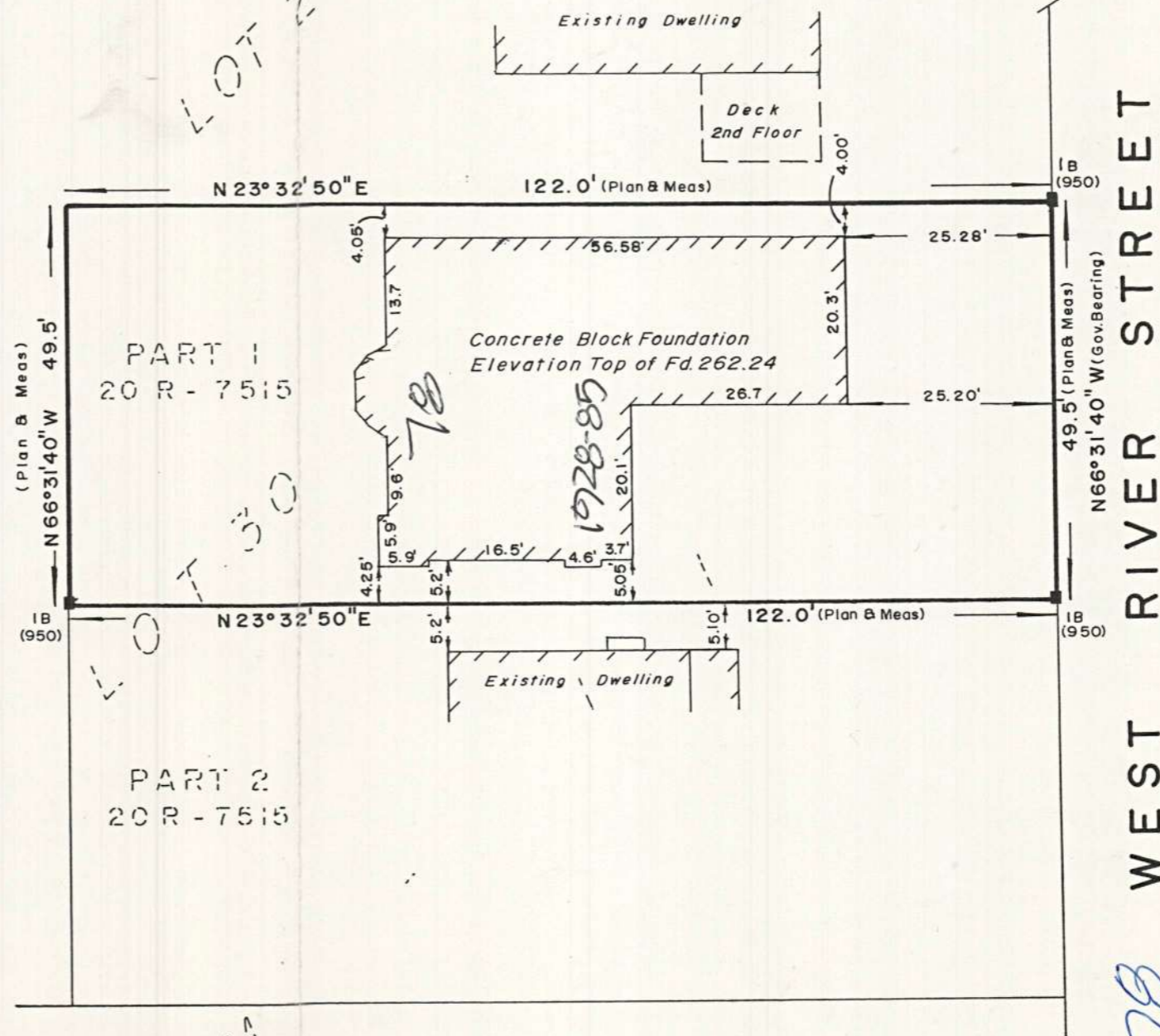
BUILDING LOCATION SURVEY OF
 PART OF LOT 30
 REG'D PLAN M-II
 TOWN OF OAKVILLE
 REGIONAL MUNICIPALITY OF HALTON

SCALE: 1 inch = 20 feet
 FRED G. CUNNINGHAM
 INCORPORATED
 ONTARIO LAND SURVEYORS
 1987



LOT 29

LAKESHORE RD. W.



WEST RIVER STREET

78

PART 1
 20 R - 7515

PART 2
 20 R - 7515

LOT 31

M

LOT 32

LEGEND

■	DENOTES	SURVEY MONUMENT FOUND
□	"	SURVEY MONUMENT SET
SIB	"	STANDARD IRON BAR
IB	"	IRON BAR
CC	"	CUT CROSS
(WIT)	"	WITNESS
IP	"	IRON PIPE
(950)	"	FRED G. CUNNINGHAM O.L.S.

BEARING NOTE
 BEARINGS SHOWN HEREON ARE ASTROMOMIC AND ARE REFERRED TO THE N66°31'40" W OF THE N.W. LIMIT OF WEST RIVER ST. IN ACCORDANCE WITH REG'D PLAN M-II

SURVEYOR'S CERTIFICATE
 I CERTIFY THAT:
 THE FIELD SURVEY REPRESENTED ON THIS PLAN WAS COMPLETED ON THE 27th DAY OF AUGUST 1987

AUGUST 31, 1987
 DATE

 Per, FRED G. CUNNINGHAM
 ONTARIO LAND SURVEYOR

FRED G. CUNNINGHAM
 INCORPORATED
 ONTARIO LAND SURVEYORS
 1021 INDUSTRY STREET
 OAKVILLE
 L6J-2X3
 (416) 845-5214
 MILTON OFFICE 205 MAIN STREET MILTON
 L9T-1N7 (416) 878-6672

SEAL